

GREAT FOR BUSINESSES & WORKPLACES

Rent a bottled water or plumbed-in Jarrah coffee machine to make piping hot and delicious drinks quickly. Enjoy a variety of flavours. No need for sugar, milk or a fridge. All you need is a power point!

Perfect for offices and receptions

Use our Jarrah coffee machines and hot beverage blends to reward staff and customers. Increase positivity in your workplace environment. People will have higher energy levels and be more cheerful.

IDEAL FOR SPORTS CLUB CANTEENS

Did you know our Jarrah coffee machines can help your sports club canteen? You can use our machines to do fundraising through coffee sales. It's an easy and simple solution.

- Lots of flavours available
- Fill cups quickly and quietly
- Costs only 40 cents per cup
- Simple touch button operation
- Automatic cleaning

Sports Club feedback

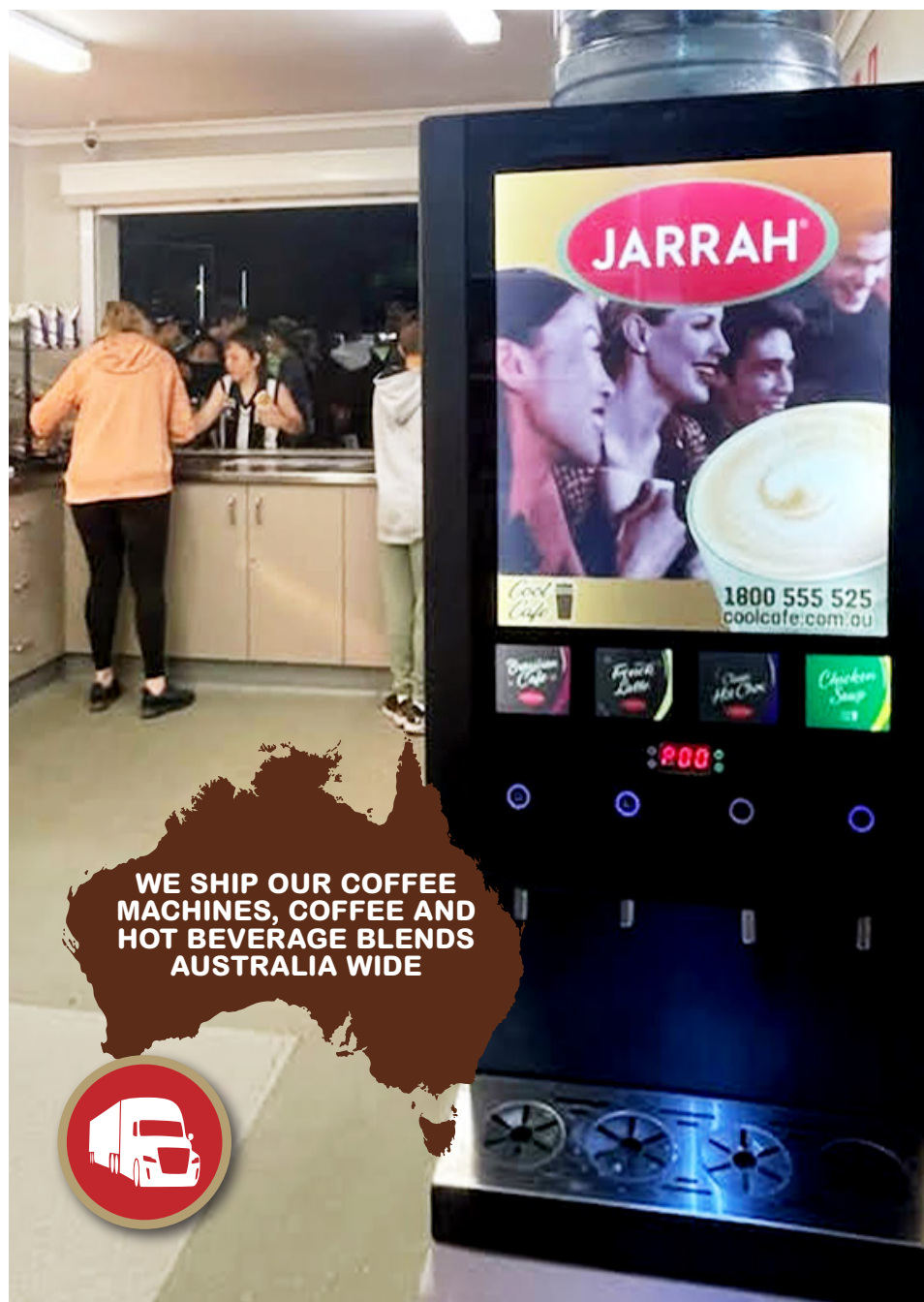
Peta, Secretary of the Monash Soccer Club, said, "French and Brazil are yum. Hot Chocolate is the bomb. Forget about buying milk or sugar; you won't need it. This machine does everything for you. No mess. Easy to use and clean. Space-efficient. Just push a button for a hot drink every time. A great addition to our canteen."

ABOUT US

We have been providing coffee machines and hot beverage blends since 2001. We are an Australian-owned company based in Gippsland and serving offices Australia-wide.



Reward staff and customers with piping hot and delicious drinks



Raise more money for your sports club with a Jarrah Coffee Machine

Cool
Cafe



**FREE TRIAL
FOR BUSINESS
IN GIPPSLAND**

GET A JARRAH
COFFEE
MACHINE
FROM \$99pa



Valid until 30 April 2026

www.coolcafe.com.au

FROM
\$99 PA

Rent a Jarrah coffee machine today

Our fully-automated and versatile Jarrah coffee machines are fantastic for your business, reception, sports club, take-away or anywhere people gather. Our professional and executive models can dispense three or four hot beverage flavours quickly, at the touch of a button.

No milk or sugar needed

Our delicious range of hot beverage blends includes rich coffees and smooth hot chocolate, which already have milk and sugar included in the blend. There is also classic black coffee and tasty chicken soup. All you need is bottled water and a power point.

Plumbing not required

Water is fed from a refillable water bottle on top of the machine. The bottle is the same as that used on water coolers. Plumbing is not required, making them simple to install and relocate.

Easy to maintain

Refilling the beverage canisters from bulk bags is easy. The machines are self-cleaning, so they are always ready for use.

Cups and lids available

We offer low-cost biodegradable paper cups and fitted plastic lids. They feel great in the hand and on your lips when drinking.

Extra convenience option

If preferred, the machine can easily be plumbed into nearby mains water supply. This saves you from swapping over water bottles.



Professional
(three flavours)

Note bottle adds 380 mm to height to both machines



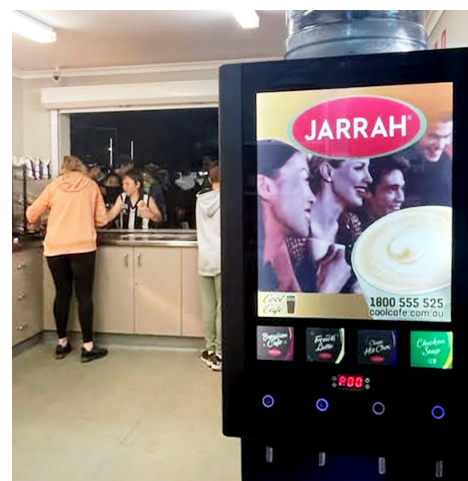
Easy to refill and maintain



Plumbed-in option available



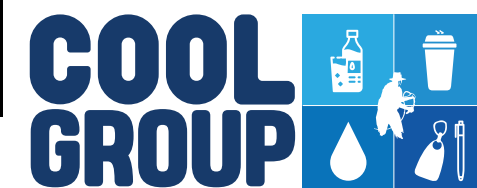
Executive
(four flavours)



Great money earner for sports club canteens

Cool Cafe
1800 555 525
www.coolcafe.com.au

Cool Cafe is proudly part of Cool Group of Companies Aust
1 Hollie Drive, Morwell, VIC 3840



COFFEE AND HOT BEVERAGE BLENDS WITH PAPER CUPS AND LIDS



JARRAH BRAZIL
\$33.00 FOR 1.5 KG
A delicious sweet coffee blend



JARRAH FRENCH
\$33.00 FOR 1.5 KG
A delicious coffee blend with vanilla flavour



JARRAH HOT CHOC
\$33.00 FOR 1.0 KG
An indulgent hot choc drink



CLASSIC BLACK
\$33.00 FOR 500 G
An intensely dark roast coffee flavour



CHICKEN SOUP
\$33.00 FOR 500 G
A tasty chicken flavoured snack



SPICED CHAI
\$33.00 FOR 1.0 KG
A exotic blend rich in taste



TOMATO SOUP
\$33.00 FOR 500 G
A creamy sweet tomato flavoured snack



HOT & COLD CUPS
\$44.00 PER 500
Box of paper 250 mL cups



LIDS FOR CUPS
\$27.50 PER 500
Box of plastic lids for 250 ml paper cups